

Bed

| | |
|---------------------|-----------------------------|
| Mattress Twin XL | 80" L x 36" W |
| Frame | 82" L x 36" W |
| Space Under Bed | 11" to 14" floor to base |

Built-in Desk

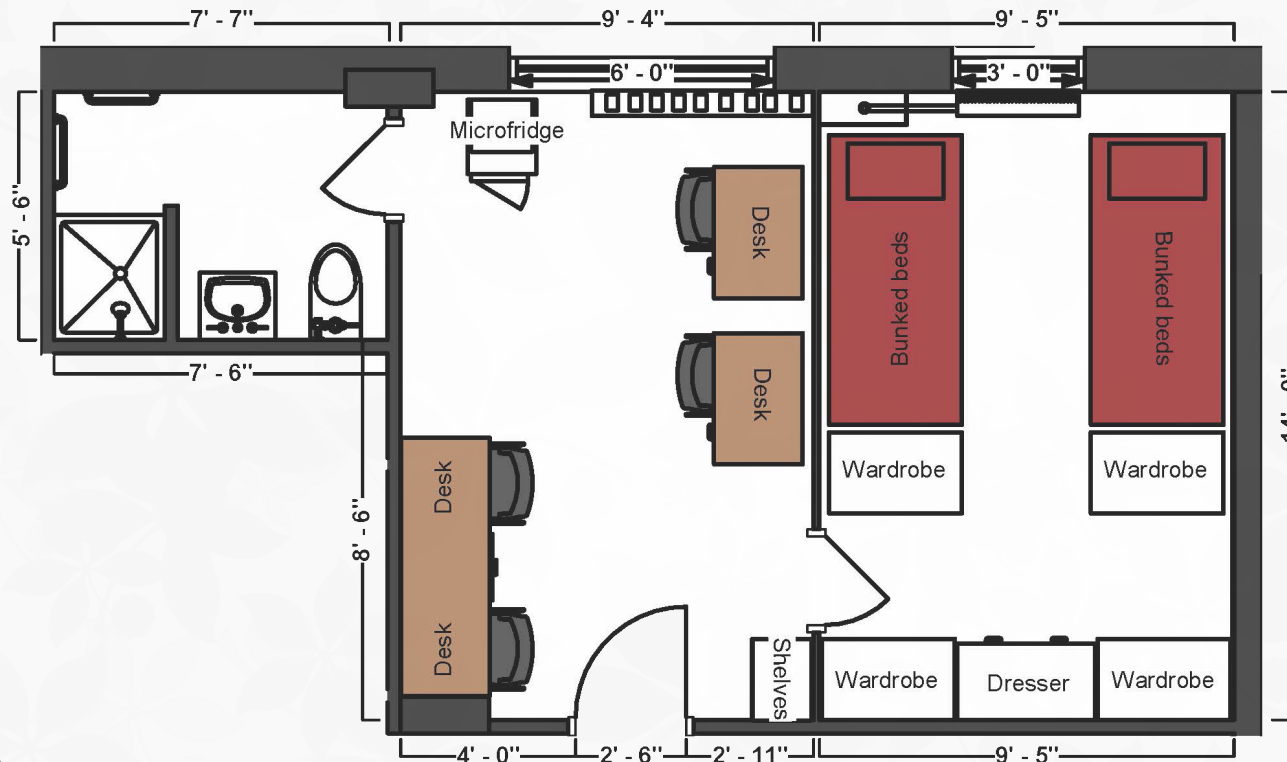
| | |
|------------------|-----------------------|
| Dimensions | 34" W x 22" L |
| Drawers | 12" W x 20" L x 8" H |
| Overhead Storage | 34" W x 11" L x 12" H |

Unattached Desk

| | |
|------------------|------------------------------|
| Dimensions | 42" W x 24" L x 32" H |
| Writing Surface | 40" W x 22" L |
| Open Shelves (2) | 14" W x 21" L x 8" H each |

Storage

| | |
|---------------|-----------------------|
| Hanging Area | 34" W x 18" L x 60" H |
| Small Drawers | 34" W x 16" L x 4" H |
| Large Drawers | 15" W x 15" L x 4" H |



Norton House

4/suite w/bath
& a/c (Rate IIA)



THE OHIO STATE UNIVERSITY

OFFICE OF STUDENT LIFE